

Flue Gas Desulfurization Solutions

Abrasion Resistant Products

**CURTISS -
WRIGHT**

Regulation Compliant Solutions

Flue Gas Desulfurization (FGD) products refer to the range of products and technologies that are used to remove sulfur dioxide (SO₂) from the exhaust gases produced by many industrial processes including the combustion of fossil fuels. Curtiss-Wright is proud to offer a full line of solutions to reduce the impact that SO₂ has on the environment and ensure regulatory compliance.

Our line of solutions include Garlock P-2000 Expansion Joints, in conjunction with their proprietary Abra-Line tube material, Flex-a-Seal Split Cartridge Seals, and abrasion resistant gaskets. These products play a crucial role in reducing the effects of SO₂ and are engineered to withstand the harshest applications. Curtiss-Wright's long standing commitment to innovation and excellence in engineering, paired with our teaming partners, makes these products a complete solution for demanding FGD applications.

Garlock Expansion Joints (EJ)

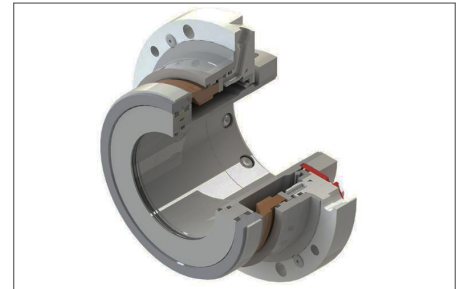
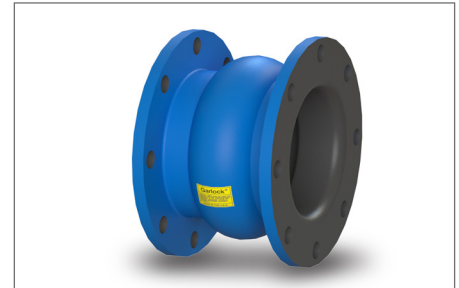
Garlock's Abra-Line expansion joint products are designed with a millable urethane formula, the most abrasion resistant rubber liner in an expansion joint available. This rubber liner is engineered to allow media to slide over liner rather than dig in and hold material. The Abra-Line EJ also features a colored line that acts as a gauge for replacement; the darker the line, the closer the EJ is to needing replaced. Heat is also a large factor in the effective life time of an expansion joint, which is why Garlock's Abra-Shield line of products can withstand temperatures up to 300°F.

Flexaseal Single Cartridge Seal

Flexaseal's heavy duty flushless slurry seal, known as the Rock Killer Crusher (RKC) seal, is built for the harshest applications in pumping and sealing solutions. The RKC Seal is made with carbide and silicon on the inboard faces, Alloy C276 for the springs, and Impregnated Carbon for the outboard faces, making this seal nearly impenetrable. It was designed with both dry and wet end mounting with an optional clamped collar for hardened pump shafts. This seal can be operated with a grease quench if flush water is not available.

Flexaseal Style 85 M Heavy Duty Split Seal

Flexaseal's split cartridge mechanical seal significantly reduces downtime and accelerates installation by encompassing all the pieces needed into just two halves. The Style 85 is the world's first true full cartridge split seal. It is pressure tested in the factory prior to shipment, providing ease of mind and excellent sealing where installed.



CONTACT INFORMATION:

18001 Sheldon Road, Middleburg Heights, OH, 44130 USA
fre_sales@curtisswright.com | +1.216.267.3200

Nuclear
CWNUCLEAR.COM

LC - 1422 - 10.2023 - IND